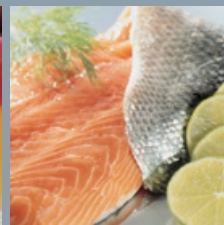
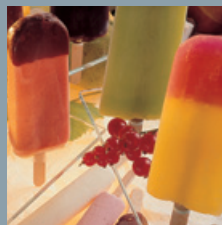


CHEST FREEZER FOR ICE
CREAM, FOOD AND
STORAGE OF BEVERAGES



Derby

QUALITY AND COOL DESIGN

FEATURES

● Standard equipment

○ Optional equipment

na Not available



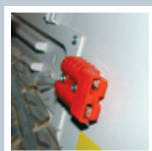
All boxes are prepared for mounting of a handy integrated bottle-opener



Easy and solid placement of parasol – prepared for at windy day



All lids comes with at firm and resistant lock



Easy access to 220 V recharger with built-in 12 V converter

External equipment	M20 C	M20 FF
Solid lid	●	●
Standard 60 mm/2.36" insulation (cyclopentane)	●	●
Lock	○	○
Property plate	○	○
Castors Ø 36 mm/1.41" height 54 mm/2.12"	○	○
Castors Ø 50 mm/1.96" height 72 mm/2.83"	○	○
Castors Ø 50 mm/1.96" height 72 mm/2.83" 2 castors with brakes	○	○
Castors Ø 75 mm/2.95" height 102 mm/4.01" 2 castors with brakes	○	○
Thermometer (internal)	○	○
Thermostat	●	Na
Bottle opener	○	○
Push Cart	○	○
Tricycle	○	○
Parasol	○	○
Internal equipment		
Basket, width 210 mm/8.3"	○	○
Basket, width 285 mm/11.2"	○	○

COLOURS on steel plates



(for optional colours a minimum order is required)

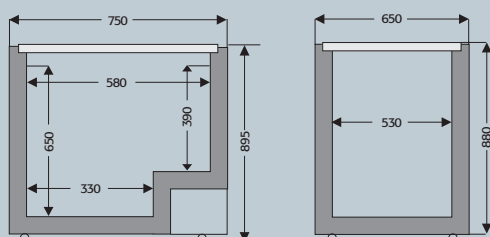


M20 FF and the pushcart



M20 FF and the tricycle

TECHNICAL INFO



Global 18	M20 C	M20 FF
Gross volume, litre	213	213
Net volume, litre	190	190
Temperature range, celcius	+2/-9	-9/-18
Energy consumption kWh/24h	1.15	1.67
Electrical connection V/Hz	12V	12V
Net weight, kg	73	73
Insulation, mm	60	60
Approvals	CE	CE
Measurements, mm		
H	895	895
W	750	750
D	650	650

All models are in climate class 3 - amb. temp 25 °C